

Q-CLIK - Water Tight Fittings

Q-Tran P: 203-367-8777
www.Q-Tran.com

Q-CLIK & INSERTS

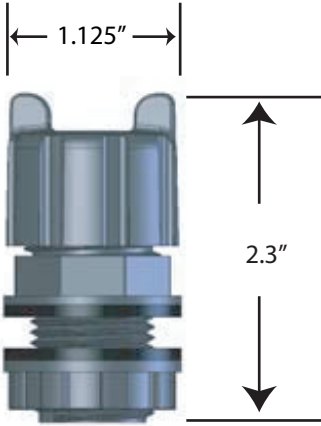
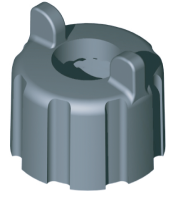
Q-Tran's Q-Clik is an IP-68 fitting that utilizes custom inserts designed to ensure water tight connection

MST: Machine
Screw Thread

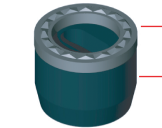
NPT: National
Pipe Taper



Screw on cap with "wing nut" feature for finger tightening.

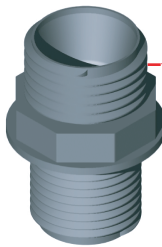
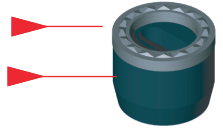


1/2" Fitting
(SIZES VARIES PER FITTING)



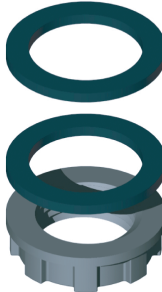
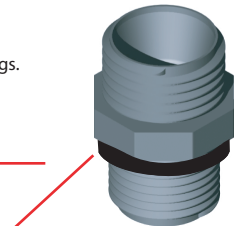
Clicking to compress insert and lock in screw cap.

EPDM molded Insert seals both to the inside of base and to wire.



MST Base unit with long threaded base to fit plastic housings. Molded in "nut washer" for tightening base + washer to seat rubber washer to exterior of housing.

NPT Base to fit into NPT threaded opening - Locking thread seals connection



One washer to seal outside another to seal inside of housing

"Nut washer" - A nut for tightening and a washer to seat rubber washer to inside of housing

Q-CLIK INSERT MODEL NUMBER KEY:

A	14/2
B	12-14/2
C	10/2
D	8/2
E	12/2+GND
F	10/2+GND

Example: Model# Q.750-2B

*Specifications: Q-Cliks with INSERT options

*Q-Clik base is made of extra strong LEXAN and is UV resistance

1/2"
Q-CLIK MST BODY
Machine Screw Thread
Model
Q-CLIK-0.50MST



Model

Q.500-1B

1/2"
Q-CLIK NPT BODY
National Pipe Taper
Model
Q-CLIK-0.50NPT

1"
Q-CLIK MST BODY
Machine Screw Thread
Model
Q-CLIK-1.00MST



Model

Q1.00-2C



Model

Q1.00-5A



Model

Q1.00-3B

3/4"
Q-CLIK MST BODY
Machine Screw Thread
Model
Q-CLIK-0.75MST



Model

Q.750-1C



Model

Q.750-1D



Model

Q.750-3A

3/4"
Q-CLIK NPT BODY
National Pipe Taper
Model
Q-CLIK-0.75NPT



Model

Q.750-2B



Model

Q.750-1E



Model

Q.750-1F

1 1/4"
Q-CLIK MST BODY
Machine Screw Thread
Model
Q-CLIK-1.25MST



Model

Q1.25-6B



Model

Q1.25-5C



Model

Q1.25-8A